

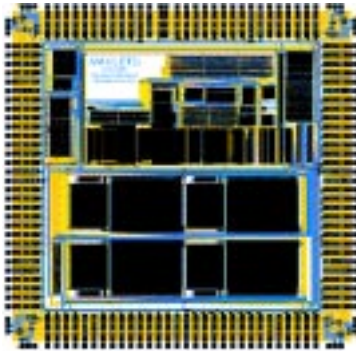
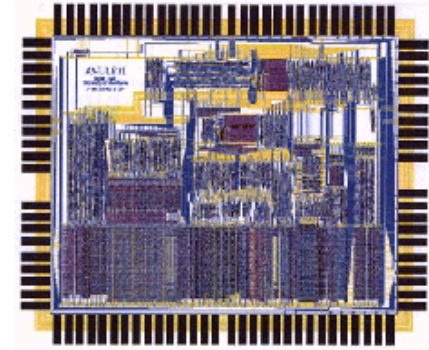
The Amulet Chips: Architectural Development for Asynchronous Microprocessors

or

Some experiences of building
large asynchronous systems

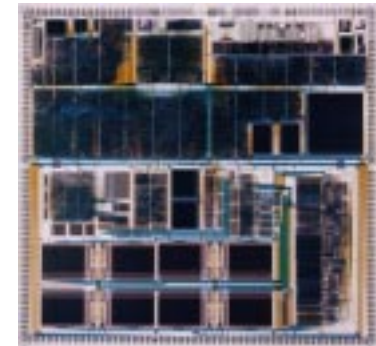
Amulet timeline

- Amulet1 1993 1.0 μm
- 'ARM6' microprocessor



- Amulet2 1996 0.5 μm
- 'ARM7' processor + cache + interfaces

- Amulet3 2000 0.35 μm
- 'ARM9' Processor SoC
- async. bus, RAM, ROM, DMA, DRAM interface
- ... + synchronous peripherals



This talk ...

- ❑ Amulet processors are history:
 - 'hard' processor cores
 - local timing assumptions in implementation
 - engineering detail no longer relevant

- ❑ Attempt to highlight still-useful aspects
 - microarchitectural features
 - implementation choices

- ❑ How it has influenced our subsequent work

Some ‘differences’ with asynchronous design

- ❑ Pipelining is easy – perhaps too easy?
- ❑ Long-range interaction is difficult
- ❑ Stage timing can be data-dependent
- ❑ System may behave non-deterministically

Two-phase or four-phase?

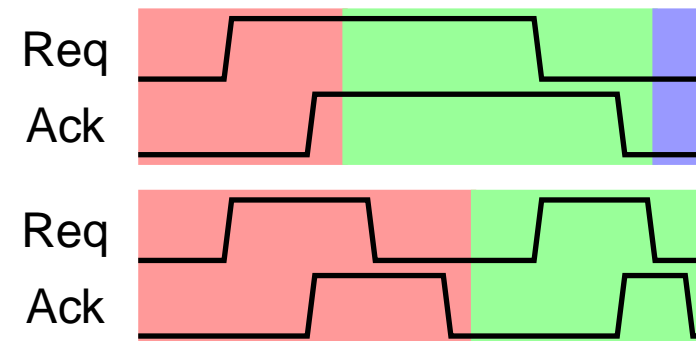
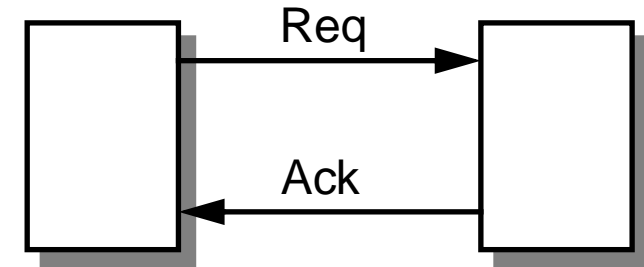
Without a clock, systems communicate via handshakes:

Handshakes can be edges (two-phase) ...

○ faster, lower power

... or levels (four-phase)

○ logic much simpler

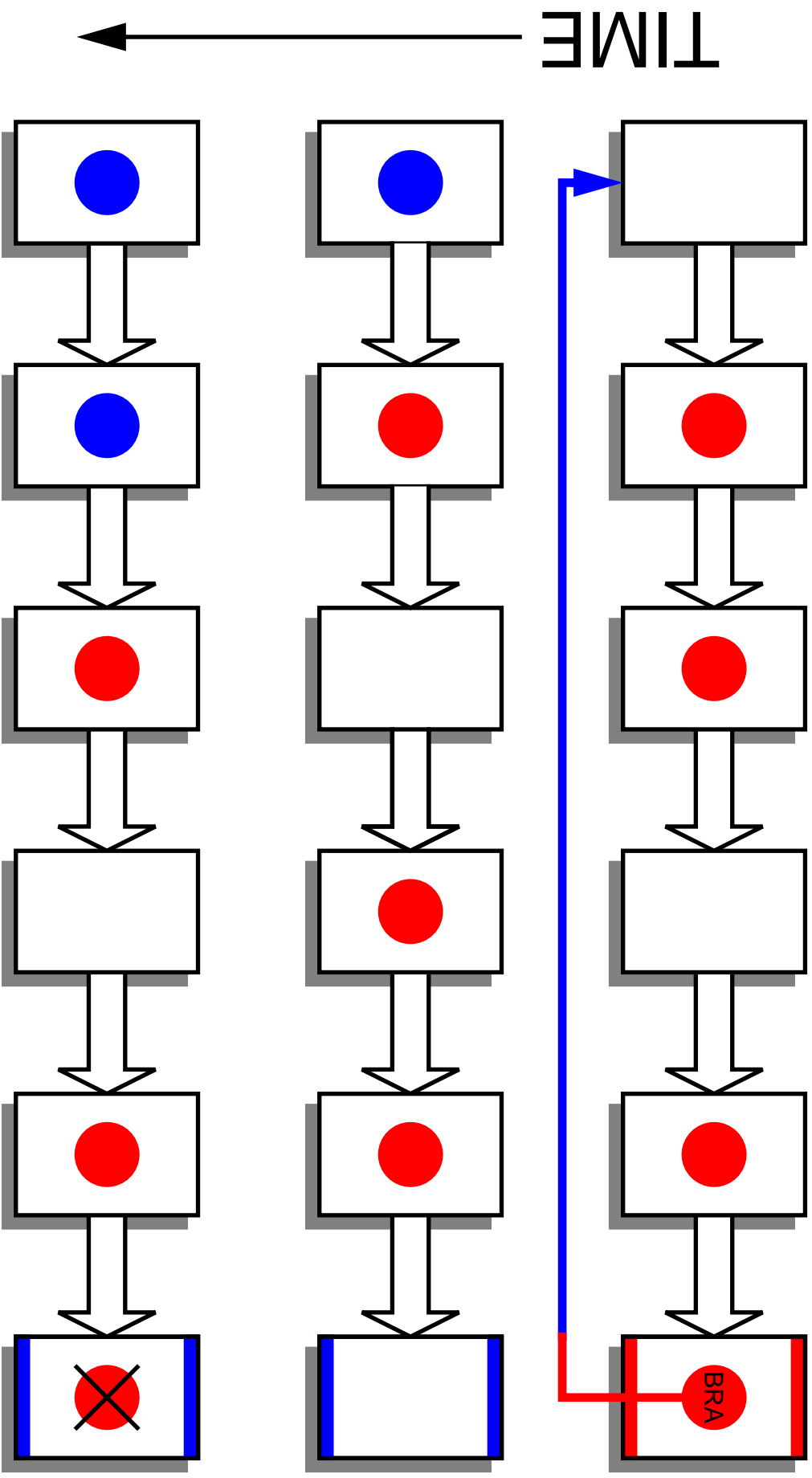


- ❑ Amulet1 used two-phase signalling on and off chip
- ❑ Subsequent devices used four-phase signalling

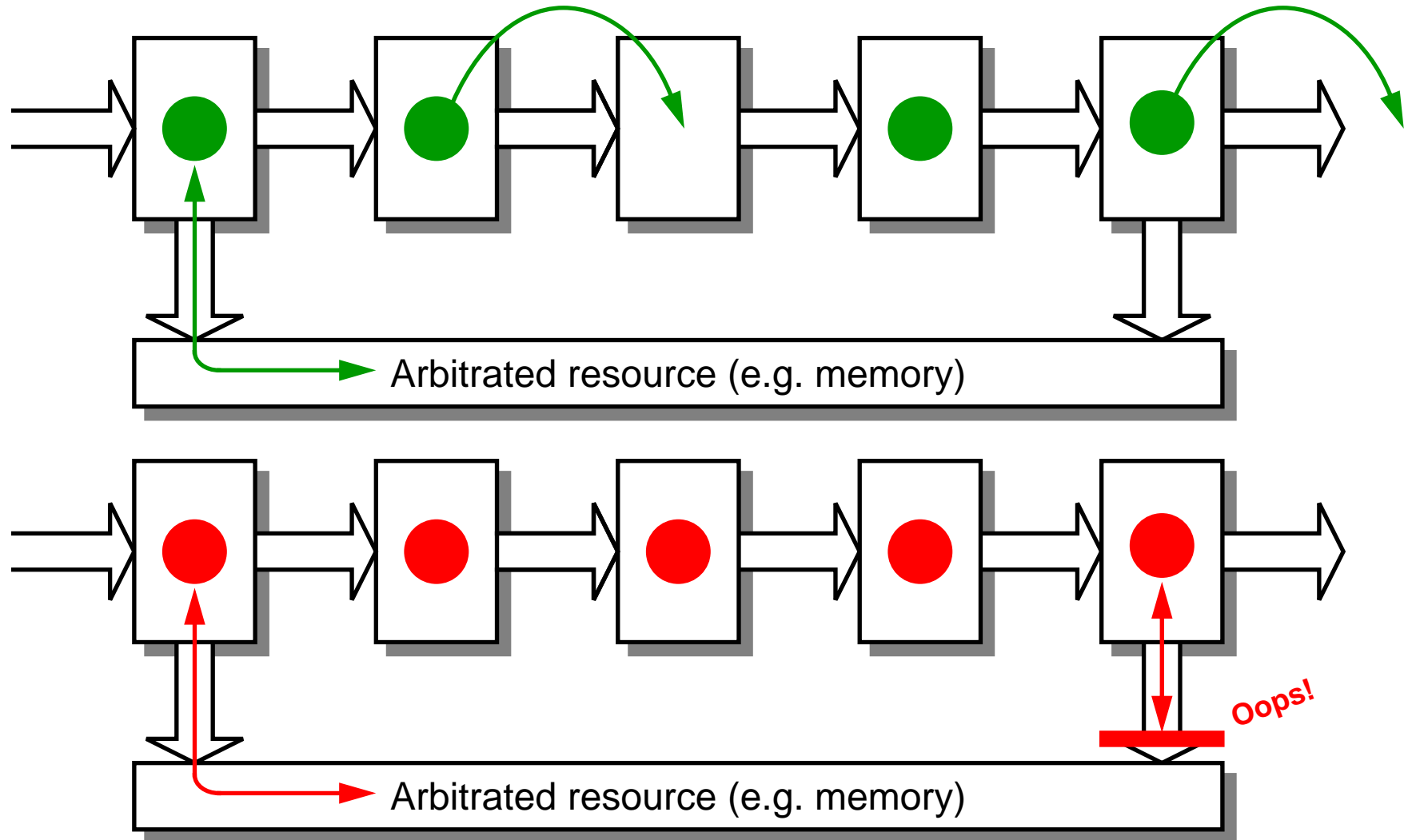
But for a recent, GALS device we have used two-phase for inter-chip communication

Flushing a pipeline

- ❑ Problem: prefetch has fetched unwanted instructions
 - possibly an unknown number
- ❑ Cannot discard for a known number of cycles
- ❑ Solution: 'colour' the instruction flows
 - committing to a branch means the current colour is no longer accepted
 - stream from branch target fetched in a different (acceptable) colour
 - two colours adequate in simple system
- ❑ Extensible
 - Amulet3 uses another colour to allow late data aborts



Deadlocks



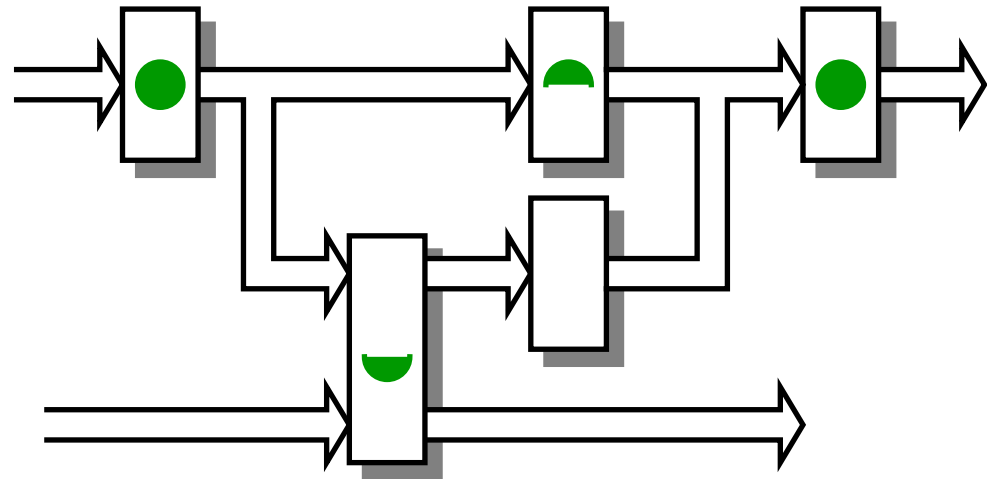
Deadlocks

In the preceding example:

- ❑ A deadlock can occur ... but only in certain circumstances
 - hard to reproduce in simulation
- ❑ The reachable state space can be very large
 - much larger than in a synchronous machine
 - too large for formal tools?

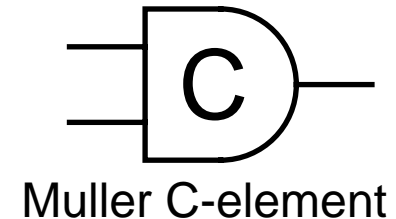
Rule: don't start a 'process' ('lock' a unit) until it's guaranteed that it will complete

Mechanism parallel token pipes act as 'throttle'



Synchronisation

- ❑ A clocked system relies on the clock to synchronise data transfers
- ❑ An asynchronous system synchronises locally
 - transmitter is ready to transmit
 - receiver is ready to receive
 - one-to-one correspondence is maintained
- ❑ Sometimes it is not predictable whether a communication will be required



Example:

```
add    r2, r1, r0
sub    r4, r3, r2    ; dependency on preceding instruction
```

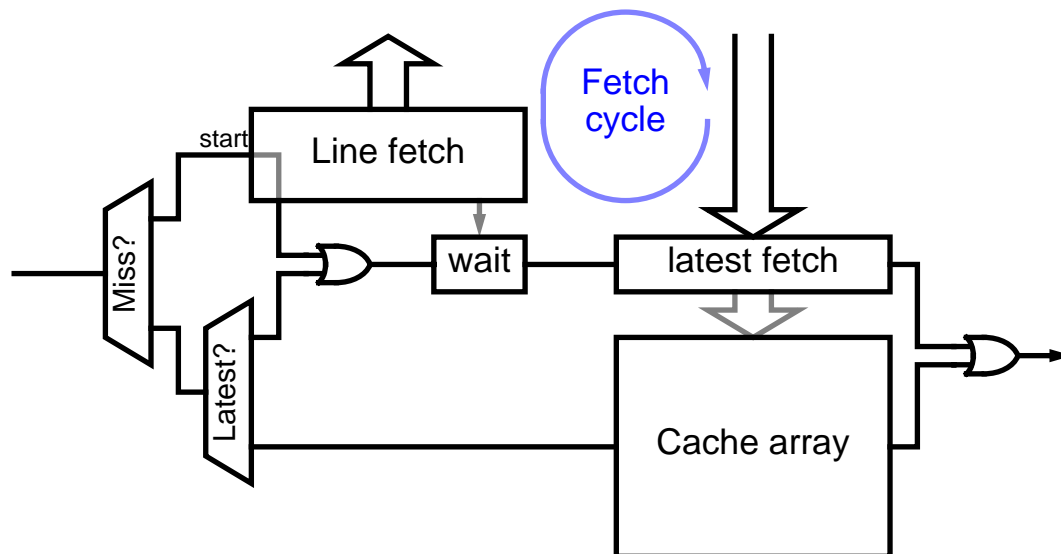
- The `add` is not aware that it should forward its result when it is issued
- Forwarding occurs to 'zero or more' following instructions

Synchronisation

Another form of synchronisation can be provided with a simple AND gate

In a defined interval:

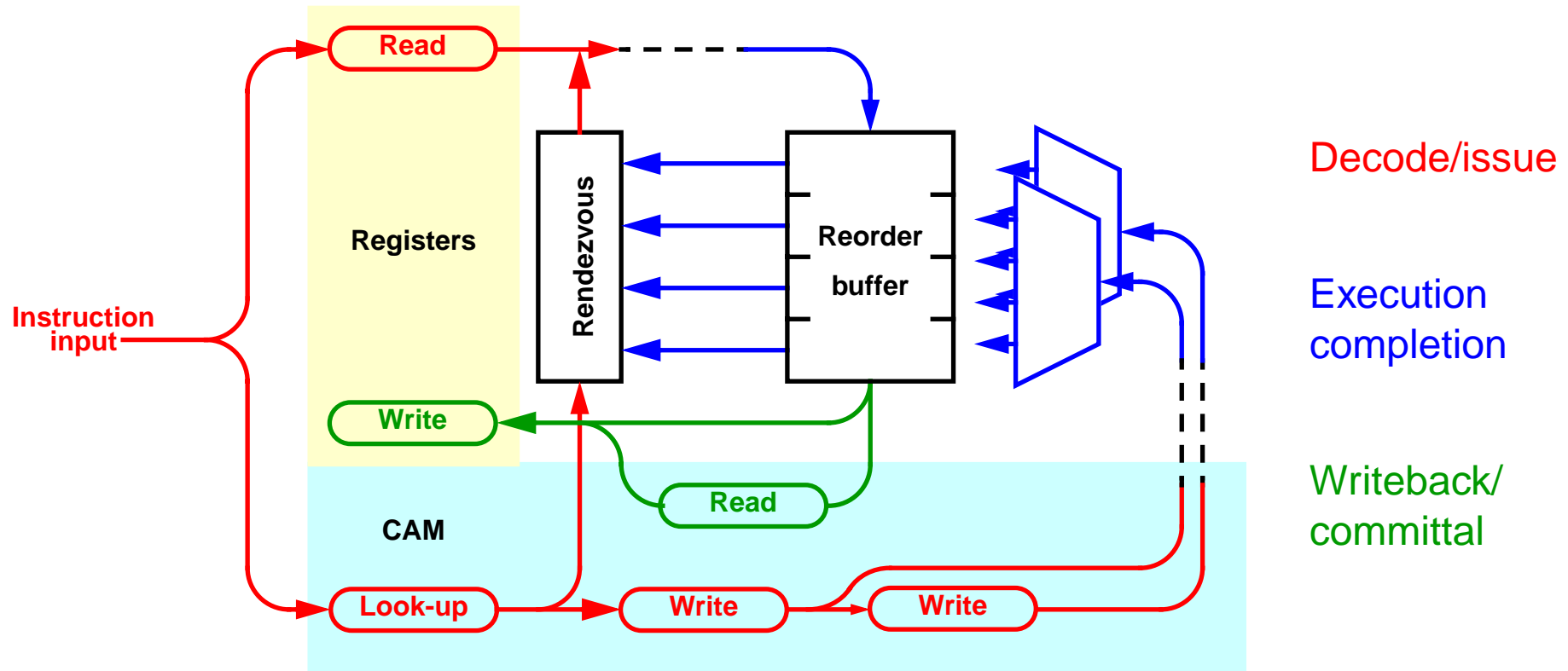
- ❑ IF one input can be guaranteed to change monotonically $0 \Rightarrow 1$...
- ❑ ... any number of handshakes on the other input may be attempted
 - the first *may be* delayed



Example: reading words from a cache line concurrently being fetched (Amulet2)

Reorder buffer

Example, using many of the preceding techniques



- ❑ The different stages are only synchronised when necessary
 - e.g. forwarding and writeback are independent

More recent work ...

- ❑ Asynchronous language development continues
 - 'Teak' offers better ("more conventional") asynchronous circuit synthesis
- ❑ Processor development using Balsa synthesiser
 - "nanoSPA" achieves ~50% ARM performance
- ❑ GALS networking on- and off-chip
 - Silistix networking used in new SpiNNaker chip
 - Low-power, noise tolerant, two-phase off-chip links

Conclusions

- ❑ Can duplicate sophisticated architectural functions without a clock
 - similar architectures give similar performance to synchronous chips
- ❑ Deadlocks are a threat
 - requires careful state-space analysis
- ❑ Design process has similarities with asynchronous software
 - such as operating system development
- ❑ Four-phase good, two-phase bad
 - (mostly)
- ❑ There are real opportunities, especially for EMC
- ❑ For fine-grain, super-fast pipelines in processes with high manufacturing variability there may be no alternative!

Acknowledgements

- ❑ The whole Amulet team throughout the decade of development
 - too numerous to list here

- ❑ The European Commission
 - much of this work was funded by various projects from the Open Microprocessor Systems Initiative

Questions?